

---

## Post-Baccalaureate ECE CERTIFICATION YOUR WAY

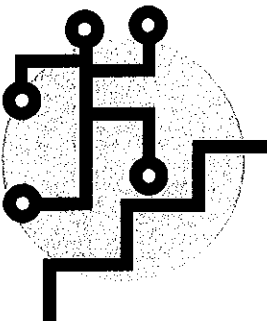
You need to be certified to be highly qualified, but you need to keep your job!

This program is designed to support non-traditional students who are childcare workers and teachers in PKCounts, HeadStart and other settings. You have a bachelors degree, years of experience, but not the certification credential you need.

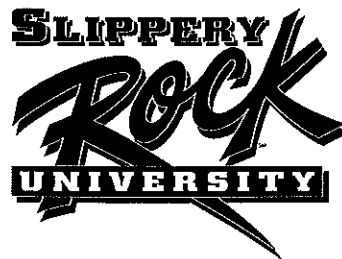
This program provides support for taking and passing Praxis tests, support for learning how to use the technology needed for on-line courses and best of all—classes that are blended—so you have access to them via the internet, but

you also have face to face time with your instructors.

We designed a way to help you earn certification while you work and that is built on the expertise you already have, while fulfilling all PDE certification



*Get to the top  
with early childhood teaching  
certification.*



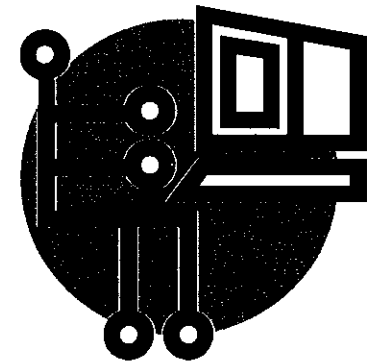
### GATE OPENERS GRANT COORDINATOR

Elementary/Early Childhood Education  
Dr. Lee Williams, Department Chairperson  
104 McKay Education Building

Phone: 724-738-2882  
Fax: 724-738-2779  
E-mail: lee.williams@sru.edu

# SlipperyRock<sup>SM</sup> University<sup>SM</sup> of Pennsylvania

## Post-Baccalaureate On-line and On-site Early Childhood Certification for current PK teachers



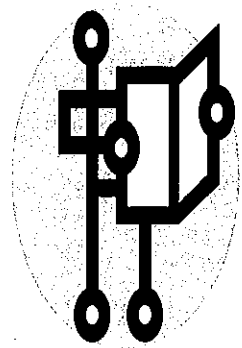
**Do you need to be  
certified to be qualified?**

**This is your program!**

**Funded by  
OCDEL Gate Openers**

## The Program Sequence

1. Apply to SRU as a post-baccalaureate student (see web address next column). Once accepted, you will be assigned an advisor to help you navigate through the program.



*Planning ahead can help you earn your certification by 12/2011 or 5/2012*

2. Take the technology workshop on campus or at your site in early January, 2011.

3. Course sequence (note: your program may include all or only some of the following courses):

**Spring 2011:** (on-site/on-line)

Science and Mathematics for Young Learners

**Summer 2011:** all courses on-line

Emerging Literacy

Early Childhood 2

Modern Primary Programs

Assessment in Early Childhood Education

**Fall 2011:** on-site, on-line

Social Studies: Connecting to Communities

ECE Field Experience (in your setting)

**Spring 2012:**

Student Teaching

## Add-on or Initial?

### ADD-ON TO PA CERT

**Add-on to K-6:** For candidates who are certified in elementary K-6, on the summer on-line courses and fall field experience and Praxis 2 (if not already taken) are required.



**Add-on to any other:** For candidates certified in secondary, art, music or modern language, all courses are required except for student teaching, and Praxis 2 might be necessary.

### INITIAL PA CERTIFICATION

In addition to the courses for add-on certification, candidates who seek initial certification have these additional requirements:

Praxis I: PPST Reading, Writing, Math

2 English courses (may have completed in initial degree)

2 Mathematics courses (may have completed in initial degree)

Student Teaching

*Apply to SRU as a post baccalaureate student: <http://www.sru.edu/academics/enrollment/undergraduate/Pages/Post-Bacc.aspx>*

## Your Way!

A program advisor who comes to you;

Convenience of on-line instruction with on-site instructor support;

Support for Praxis I and 2;

A technology workshop so you are sure to be comfortable with the computer-based skills you will need!

*Because this program is designed for experienced and in-the-field practitioners, the course content and delivery methods were specifically developed to suit you!*

### GATE OPENERS GRANT COORDINATOR

Dr. Lee Williams  
104 McKay Education Building  
ELEC Department  
Slippery Rock University of PA

Phone: 724-738-2882

Fax: 724-738-2779

E-mail: [lee.williams@sru.edu](mailto:lee.williams@sru.edu)